



# Rotron Model G Centraxial Blowers

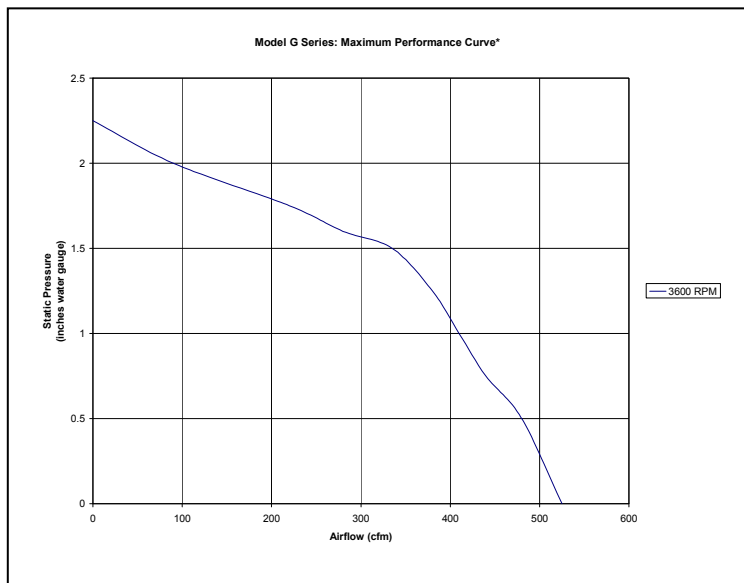
## General Centraxial Blower Information

Rotron Centraxial Blowers have an impeller that, unlike the Centrifugal Blower, achieves a substantial portion of conversion of velocity energy to pressure energy within the impeller itself. This impeller is much less dependent upon a scroll or housing and may therefore be operated without a scroll or housing with a relatively small loss of in performance and efficiency. The impeller function is similar to a turbine impeller.

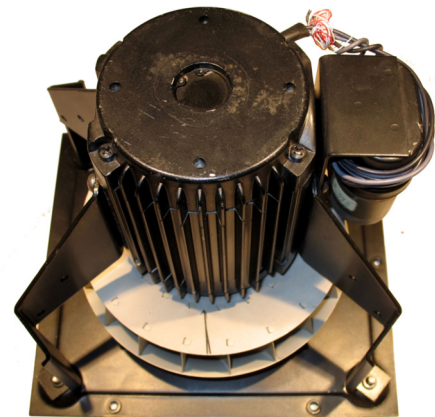
A benefit of this kind of product is that, when operated with a housing unit, the blast direction may be changed relatively easily.

Centraxial Blowers come in a variety of voltages and frequencies. Most units are available with an optional internal Fan Performance Sensor (FPS) or external Low Speed Warning Device (LSWD).

## Rotron Model G



\*Individual Performance Curve Characteristics Available Upon Request



### General

- Physical envelope: 7.62" x 8.62" x 7.56" <sup>1</sup>.
- Weight: approximately 14.0 lbs.
- Rugged military grade air mover suitable for pressurizing cabinets.
- Uniform discharge area (complete periphery of the blower wheel) eliminates the need for ductwork within the cabinet.
- Speeds range between 1,670 and 3,600 RPM.
- Airflows range from 132 to 535 CFM.
- Maximum Static Pressure: 2.25 IWG.

### Materials and Finishes

- Motor finished with a chemical conversion coating per MIL-C-5541, top coat of lusterless black enamel, color #37038, per Federal Standard 595 conforming to TT-E-489 Type B.
- Chromic anodize finish on aluminum impeller
- Zinc chromate plating on spiders.
- Corrosion-resistant stainless steel shaft and hardware.
- Impeller runs on two high-precision, double-shielded, stainless steel ball bearings (ABEC Class 1) for a long, maintenance-free life.
- Motors have stator winding insulation which is rated for continuous duty for Class F.

<sup>1</sup> See specific part-number drawing for complete product dimensions

## Options/Accessories

- Inlet Screen Guard
- LSWD (Low Speed Warning Device)
- FPS (Fan Performance Sensor)



North America  
T: +1 845-679-1361  
F: +1 845-679-1870

United Kingdom  
T: +44 (0) 1932 765822  
F: +44 (0) 1932 761098

Specifications subject to change without notice

Europe  
T: +49 8145 951767  
F: +49 8145 951768

Asia Pacific  
T: +65 6484 2388  
F: +65 6481 6588

Contact E-mail: [mlinquiry@ametek.com](mailto:mlinquiry@ametek.com)

[www.ametekaerodefense.com](http://www.ametekaerodefense.com)



### AC Line Powered Units <sup>1</sup>

- 3-phase and 1-phase permanent-split capacitor motor designs.
- Fixed speeds (performance) based on input frequency.
- Meets or exceeds the requirements of MIL-B-23071 and other applicable U.S. military and commercial aerospace specifications <sup>2</sup>.
- Max free delivery airflow of 535 at 50/60 Hz and 460 CFM at 400 Hz.
- Ambient temperature range: -54 °C to 100 °C.

<sup>1</sup> Airflow, maximum ambient and acoustic levels will vary depending on design parameters

<sup>2</sup> Please call for further information concerning applicable U.S. military and commercial aerospace specifications

### DC Line Powered Units – E.C.D.C.®

- Not available with this model blower.

### Optional DC-AC Inverters and AC-AC Converters for AC Powered Models<sup>1</sup>

#### BATAC® Inverter Driven Units

- AC square wave fans driven from a DC power source through a BATAC® Inverter

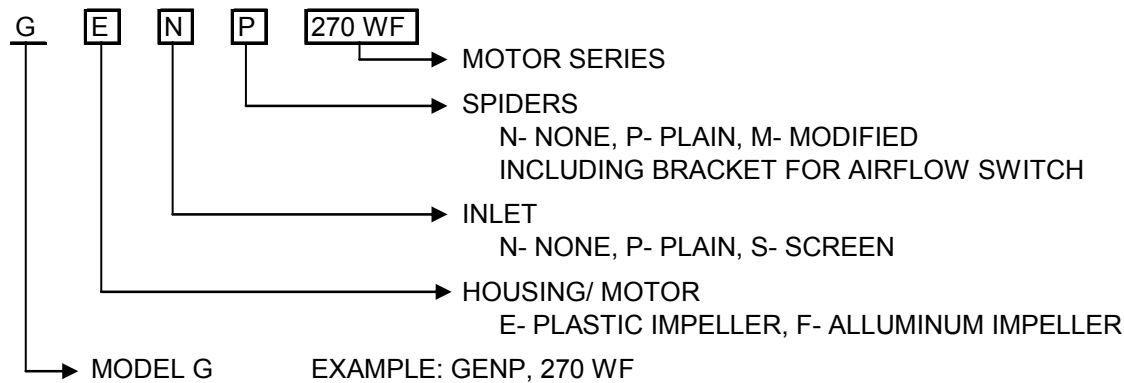
#### DELTAAC® Converter Driven Units

- DELTAAC® converters allow high frequency (typically 400 Hz) fans to be driven by variable frequency (typically 360-800 Hz) power or low frequency 50/60 Hz power to obtain the higher frequency performance

<sup>1</sup> See Accessories: Power Conversion

### Unit Description Key

The unit description key is for reference only and should not be confused with a part number. While most units are custom configurations, not all variations of the key shown below are possible. Please contact the Application Engineering department for more information regarding possible custom configurations.



\* "X" IN ANY POSITION DENOTES SPECIAL FOR THAT FEATURE

### Ordering Information

When ordering, please specify the specific Rotron part number listed on the model table below. Further ordering information, based on the configuration and motor series, may be obtained by contacting customer service. Please refer to the Unit Description Key explanation above.



North America  
T: +1 845-679-1361  
F: +1 845-679-1870

United Kingdom  
T: +44 (0) 1932 765822  
F: +44 (0) 1932 761098

Specifications subject to change without notice

Europe  
T: +49 8145 951767  
F: +49 8145 951768

Asia Pacific  
T: +65 6484 2388  
F: +65 6481 6588

[www.ametekaerodefense.com](http://www.ametekaerodefense.com)

Contact E-mail: [milinqury@ametek.com](mailto:milinqury@ametek.com)



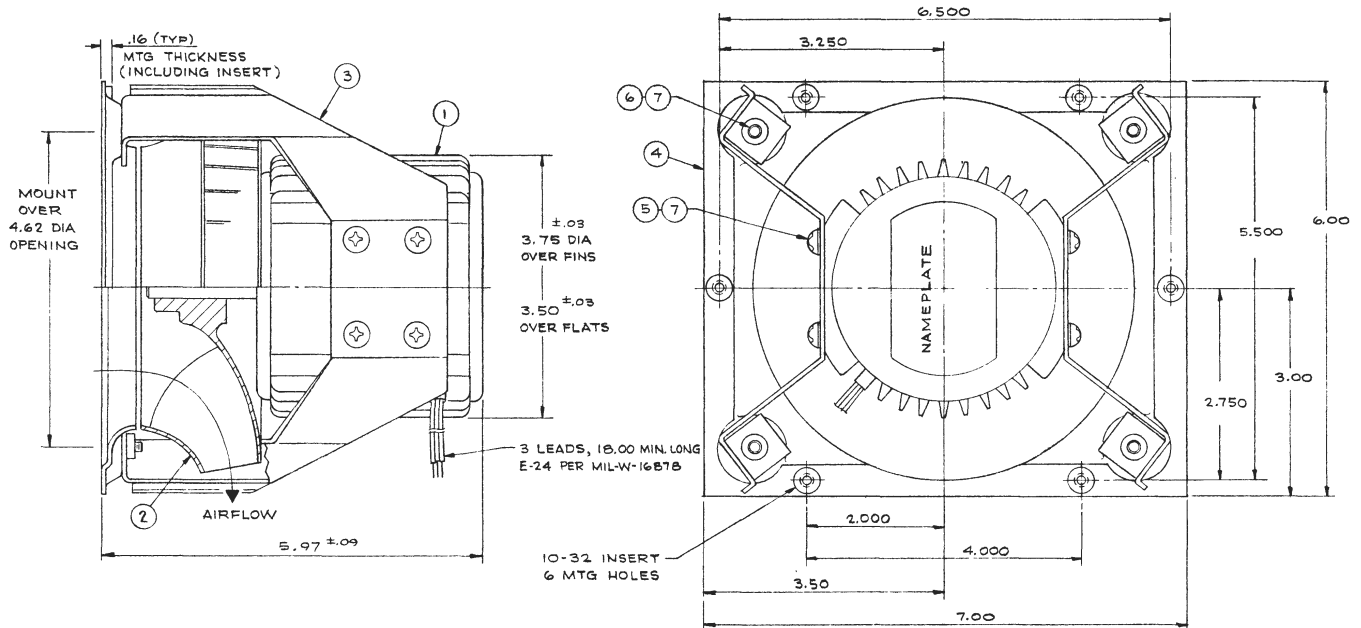
Rotron / Airscrew



## Standard Product Offering of AC Line Powered Models

Part #	Product Description	Flow (CFM)	Max Pressure (IWG)	Nom. RPM	Nom. Watts	Line Amps (A)	Max Amb (C)	Weight	Volts	Phase	Hz	Capacitor	Airflow Source Data	Features
026027000	GPP 1096WH	535	-2.2	3300	391	0.7	60	7.0	460	3	60	N/A	A691-9	LEADS
036139000	GPP 855ZF	525	-2.3	3300	359	3.8	70	7.0	115	1	50/60	12.0/220	A147-23	LEADS
035820000	GPP 351BF	385	-1.5	3100	170	0.8	85/50	7.0	220	1	50/60	2.5/330	A192-30	DUAL VOLTAGE MOTOR
036418000	GPP 277WF	277	-1.8	3600	205	3.0	50	7.0	115	3	400	N/A	A182-20	LEADS
026614000	GSP 329AF	240	-1.5	3100	137	1.3	85/75	7.0	115	1	50/60	4.0/220	A058-23	LEADS
034343000	GNN 140AF	132	-0.4	1750	60	0.8	25/60	7.0	115	1	50/60	4.0/330	A318-16	LEADS

## MODEL G – AC

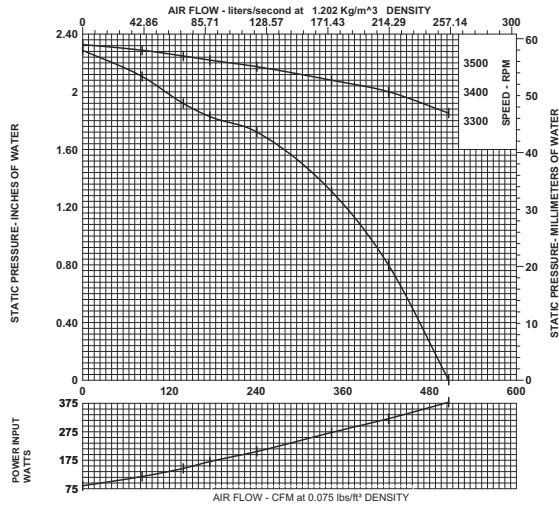




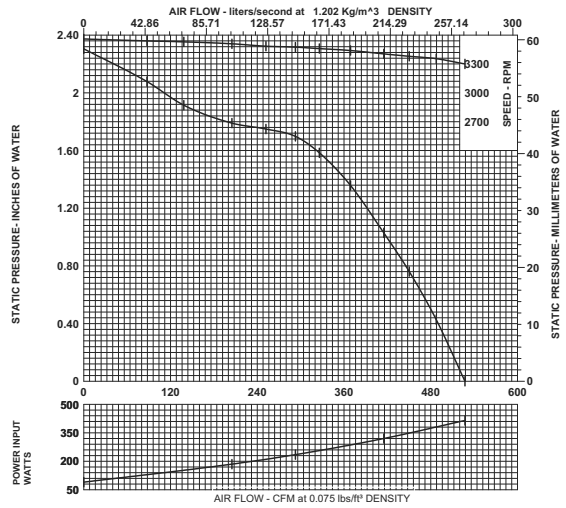
Rotron / Aircrew



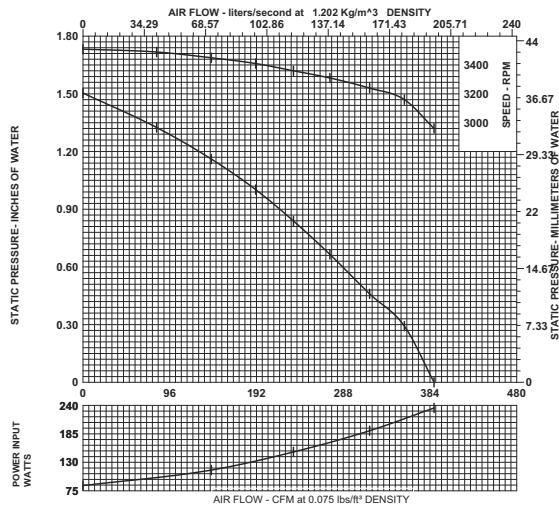
P/N 026027000 GPP 1096WH A691-9



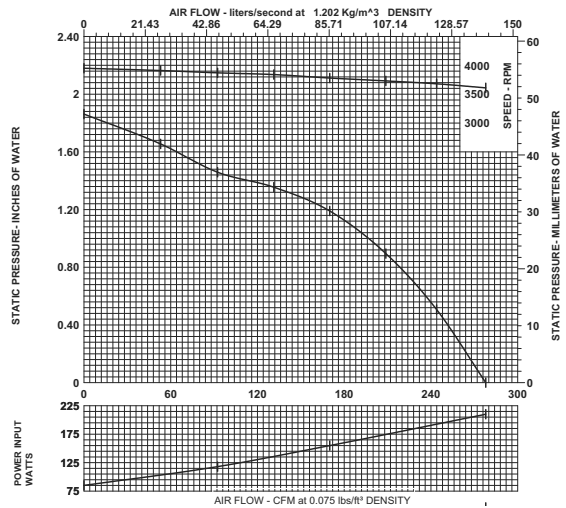
P/N 036139000 GPP 855ZF A147-23



P/N 035820000 GPP 351BF A192-30



P/N 036418000 GPP 277WF A182-20



P/N 026614000 GSP 329AF A058-23

P/N 034343000 GNN 140AF A318-16

CONSULT FACTORY FOR DATA

CONSULT FACTORY FOR DATA



North America  
T: +1 845-679-1361  
F: +1 845-679-1870

United Kingdom  
T: +44 (0) 1932 765822  
F: +44 (0) 1932 761098

Specifications subject to change without notice

Europe  
T: +49 8145 951767  
F: +49 8145 951768

Asia Pacific  
T: +65 6484 2388  
F: +65 6481 6588

Contact E-mail: [mlinqury@ametek.com](mailto:mlinqury@ametek.com)

[www.ametekaerodefense.com](http://www.ametekaerodefense.com)